



BID BULLETIN NO. 2
For LBP-HOBAC-ORA-GS-20170619-03(2)

PROJECT : **Supply, Delivery and Installation of Various Vaults and Safes for LANDBANK Branches and Extension Offices (Subject to Ordering Agreement)**


IMPLEMENTOR : **Procurement Department**

DATE : **October 5, 2017**

This Bid Bulletin is issued to modify, amend or clarify items in the Bid Documents. This shall form an integral part of the Bid Documents.

The modifications, amendments or clarifications are as follows:

- The specifications for the vaults and safes (Annexes A, B and C), Section VII (Specifications) and Checklist of the Bidding Documents (Item 6) have been revised. Please see attached revised Annexes A-1 to A-2, B-1 & C-1 and specified sections of the Bidding Documents.


ALWIN I. REYES, CSSP
Assistant Vice President
Head, Procurement Department and
HOBAC Secretariat

Section VII. Specifications

Bidders must state in the Statement of Compliance column below either "Comply" or "Not Comply" against each of the individual parameters of each Specification stating the corresponding performance parameter of the goods and/or services offered. Statements of "Comply" or "Not Comply" must be supported by evidence in a Bidders Bid and cross-referenced to that evidence.

Evidence shall be in the form of manufacturer's un-amended sales literature, unconditional statements of specification and compliance issued by the manufacturer, samples, independent test data, etc., as appropriate.

A statement that is not supported by evidence or is subsequently found to be contradicted by the evidence presented will render the Bid under evaluation liable for rejection.

A statement either in the Bidders statement of compliance or the supporting evidence that is found to be false either during Bid evaluation, post-qualification or the execution of the Contract may be regarded as fraudulent and render the Bidder or supplier liable for prosecution subject to the provisions of ITB Clause 3.1(a)(ii) and/or GCC Clause 2.1(a)(ii).

Item	Specifications	Statement of Compliance <i>(Please state in this column either "Comply" or "Not comply")</i>
1) 20 Units Cash Vault Door with Time Lock	Per Revised Annexes A-1, A-2 & A-3	
2) 20 Units Emergency Vault Door	Per Revised Annexes B-1 to B-2	
3) 20 Units Vault Ventilator	Per Revised Annexes C-1 to C-2	
4) 20 Units Cash Safe with Time Delay Lock and Shelves (with Drawers)	Per Annexes D-1 to D-2	
5) 20 Units Cash Safe with Time Delay Lock and Shelves (without Drawers)	Per Annexes E-1 to E-3	

Other requirements:

The following documents must be submitted and included in the eligibility/technical envelope:

- a) Brochure or other official documents coming from the manufacturer indicating the complete specifications of the offered specimen signature card cabinet;
- b) Certificate of satisfactory performance issued by the client with whom the bidder has completed its single largest contract. If the bidder has existing or completed contracts with LANDBANK, a certificate of satisfactory

performance issued by the Head, Project Management and Engineering Department shall likewise be submitted. Bidders who fail to submit these certifications shall be automatically disqualified.

Conforme:

Name of Bidder

Signature over Printed Name of
Authorized Representative/Signatory

Position

**Checklist of Bidding Documents
for Procurement of Goods and Services**

Documents should be arranged as per this Checklist. Kindly provide folders or guides, dividers and ear tags with appropriate labels.

The Technical Component (First Envelope) shall contain the following:

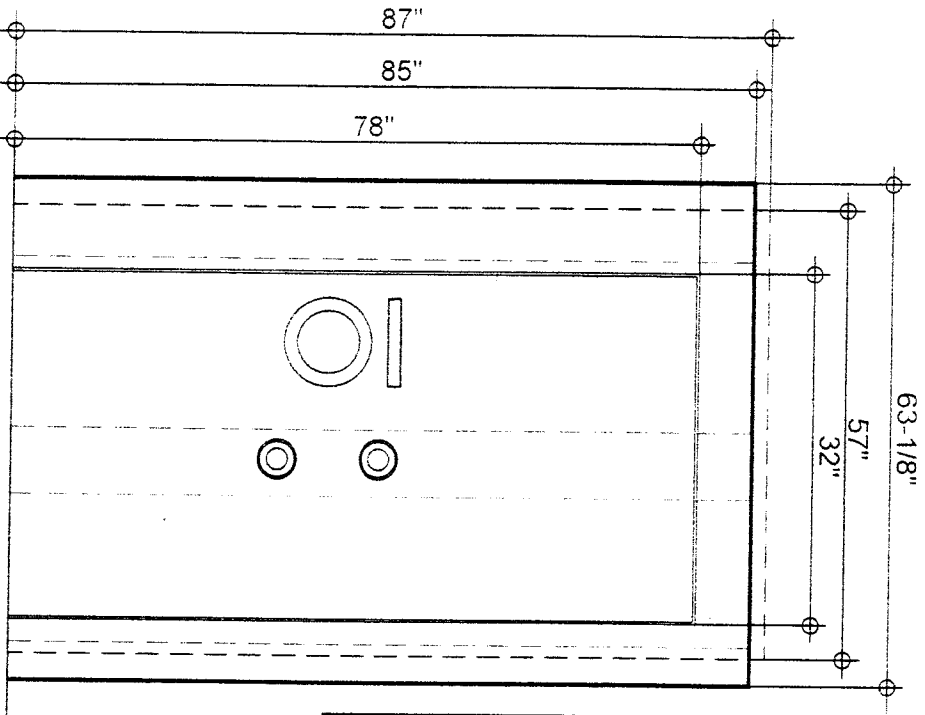
1. Duly notarized Secretary's Certificate attesting that the signatory is the duly authorized representative of the prospective bidder, and granted full power and authority to do, execute and perform any and all acts necessary and/or to represent the prospective bidder in the bidding, if the prospective bidder is a corporation, partnership, cooperative, or joint venture (*Please use Form No. 8*)
2. Duly notarized Omnibus Sworn Statement (*Please use Form No. 7*)
3. Eligibility requirements
 - **Legal Document**
 - 3.a PhilGEPS Certificate of Registration (Platinum Membership)
 - **Technical / Financial Documents**
 - 3.b Statement of the prospective bidder of all its ongoing government and private contracts, including contracts awarded but not yet started, if any, whether similar or no similar in nature and complexity to the contract to be bid, within the relevant period as provided in the Bidding Documents. The statement shall include all information required in the PBDs prescribed by the GPPB. (*sample form - Form No. 3*) The duly signed form shall still be submitted even if the bidder has no on-going contract.
 - 3.c Statement of the prospective bidder identifying its single largest completed contract similar to the contract to be bid, equivalent to at least fifty percent (50%) of the ABC supported with contract/purchase order, end-user's acceptance or official receipt(s) issued for the contract, within the relevant period as provided in the Bidding Documents. The statement shall include all information required in the PBDs prescribed by the GPPB (*Please use Form No. 4*)
 - 3.d The prospective bidder's computation for its Net Financial Contracting Capacity (*Please use Form No. 5*)
 - 3.e Valid joint venture agreement (JVA), in case the joint venture is already in existence. In the absence of a JVA, duly notarized statements from all the potential joint venture partners stating that they will enter into and abide by the provisions of the JVA in the instance that the bid is successful shall be included in the bid. Failure to enter into a joint venture in the event of a contract award shall be ground for the forfeiture of the bid security. Each partner of the joint venture shall submit the legal eligibility documents. The submission of technical and financial eligibility documents by any of the joint venture partners constitutes compliance.

- 3.f. Brochure or other official documents coming from the manufacturer indicating the complete specifications of the offered specimen signature card cabinet
- 3.g. Certificate of satisfactory performance issued by the client with whom the bidder has completed its single largest contract. If the bidder has existing or completed contracts with LANDBANK, a certificate of satisfactory performance issued by the Head, Project Management and Engineering Department shall likewise be submitted. Bidders which fail to submit these certifications shall be automatically disqualified.
4. Bid security in the prescribed form, amount and validity period (ITB Clause 18.1 of the Bid Data Sheet);
5. Schedule VI - Schedule of Requirements with signature of bidder's authorized representative/signatory.
- 6. Revised Section VII - Specifications with response on compliance and signature of bidder's authorized representative/signatory.**
7. Post-Qualification Documents – (Non-submission of the following documents during the bidding date shall not be a ground for the disqualification of the bidder):
 - 7.a Business Tax Returns per Revenue Regulations 3-2005 (BIR No. 2550 Q) VAT or Percentage Tax Returns for last two (2) Quarters;
 - 7.b Income Tax Return for 2016

The Financial Component (Second Envelope) shall contain the following:

1. Duly filled out Bid Form signed by the bidder's authorized representative/signatory (*Please use Form No.1*)
2. Duly filled out Schedule of Prices signed by the bidder's authorized representative/signatory (*Please use Form No.2*)

Cash Vault Door



1 FRONT VIEW
IDF 1

DIMENSION	
Overall Dimensions (w/ architrave)	
H	85"
W	63-1/8"
Masonry Opening	
H	87"
W	57"
Net Door Thickness	3-1/2"
Overall Door Thickness	10-1/4"
Clear Door Opening	
H	78"
W	32"

TECHNICAL SPECIFICATIONS:

- Two (2) Hours Fire Resistant
- Clear Opening** 78"H x 32"W
Net Door Thickness: 3-1/2" Thick
Overall Door Thickness: 10-1/4" Thick
Masonry Opening: 87"H x 57"W
Overall Dimensions(w/architrave): 85"H x 63-1/8"W
- Door Swing** 180 degrees right or left
- Full torch and drill resistance over the entire face of the door
- Main vault door system**
12mm thk. stainless steel cladding (hairline finish) with dual component system
Component 1 Vault door face shall be 12mm thk. (3a 1b) stainless steel cladding hairline finish with fire and burglar resistive cement base security insulation with 16mm diam reinforced steel bar (RSB) Horizontal and Vertical spaced at approximately 150mm bothways and 12mm diam bars x 75mm spaced @ 300mm o.c.b.w. (traverse) with 3.2mm thk x 50mm x 50mm steel nailing barrier to be filled by cement-based insulation (12,000 psi) minimum.
Component 2 mechanism bed plate - 3mm thk hot rolled steel for the locking mechanism and hinge lock cover should be mounted to consider the accessibility of the locking mechanism/hinge lock for maintenance and repair.
- Day guard Lock** - is furnished to keep the locking bar in the unlocked position when door is opened during business hours. Prevents lock-in of customers or employees by accident
- Locking Mechanism** - interlocking system shall be continuous steel locking bar type. Locking mechanisms should be made of chromium and is protected with hard plate per manufacturer's standard
- Locks: the sliding locking bar is controlled by means of two combination locks. Each combination lock is capable of one million combination changes and is installed at an ideal height for easy operation and setting.
- Hinges** - the cash vault door is equipped with two sturdy bearing for light door swing. Hinge adjustment is provided to raise or lower the door in cases of misalignment
- Grille day gate** - for controlled access to the vault during business hours, the vault entrance is provided with a day gate. The gate is equipped with a double cylinder key lock.
- Time Lock** - lock should be UL listed with 2 movements located at the back of the vault door. Mounting height should at least be eye level or approximately 140mm from finished floor line
- Mechanical Retlock** - a relocking mechanism attached to the combination lockset which activates when attack is mounted against the lock itself
- Door Stopper** - a modern stopper with rubber bumpers is provided for installation in bank floor to prevent accidental slamming of the door to the wall
- Net weight** - should not exceed 1.5 tons
- Cladding** - 12mm thk Stainless Steel hairline finish

NOTES:
• THE SUPPLIER SHALL MAKE AVAILABLE THE ACTUAL UNIT FOR INSPECTION AT THEIR WAREHOUSE PRIOR TO POURING OF THE CONCRETE FILLING MATERIAL
• THE SUPPLIER SHALL SUBMIT TEST RESULT FOR THE CONCRETE FILLING MATERIAL



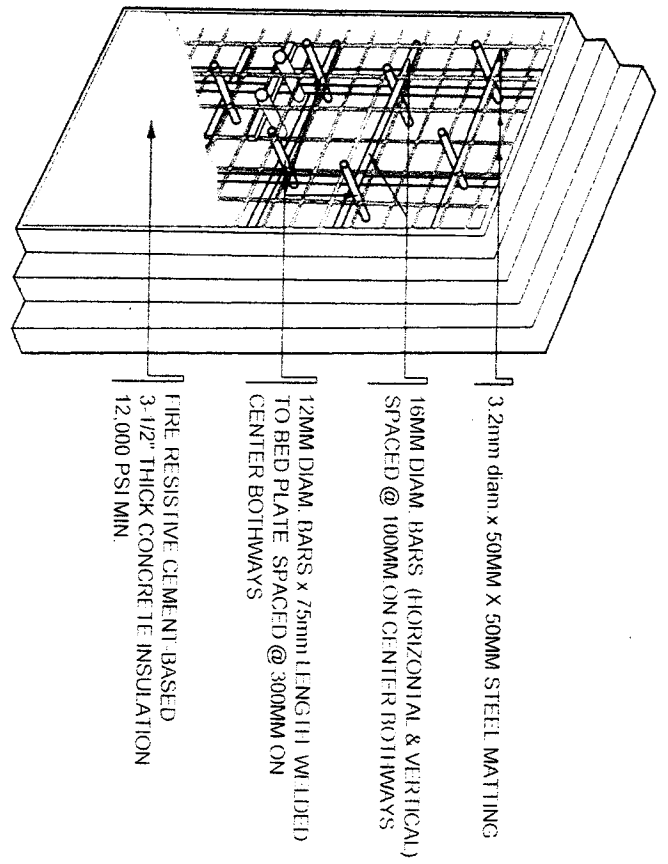
LANDBANK OF THE PHILIPPINES
PROJECT MANAGEMENT & ENGINEERING DEPT
1508M H DELA PUENTE ST. MANILA
CORNER RIVER CORRIDOR ST. MANILA

Cash Vault Door

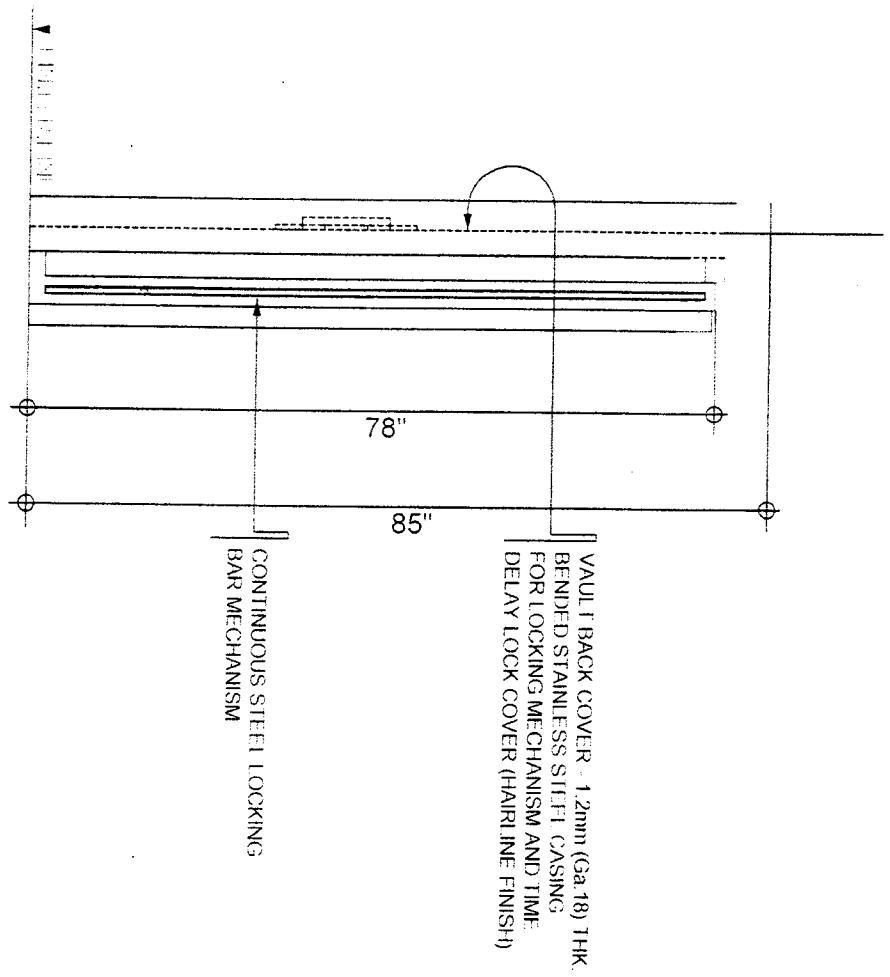
APPROVED: *[Signature]*
ALIXAVIER R. S. LAYAN
Head PM/ID

NO.	REVISION	DATE
1	ISSUE FOR BIDDING	11/11/2011
2	REVISION	11/11/2011
3	REVISION	11/11/2011
4	REVISION	11/11/2011

NOTES:
 • THE SUPPLIER SHALL MAKE AVAILABLE THE ACTUAL UNIT FOR INSPECTION AT THEIR WAREHOUSE PRIOR TO POURING OF THE CONCRETE FILLING MATERIAL.
 • THE SUPPLIER SHALL SUBMIT TEST RESULT FOR THE CONCRETE FILLING MATERIAL



1 SECTION OF COMPONENT 1
 IDF-1



1 SECTION OF VAULT DOOR
 IDF-1



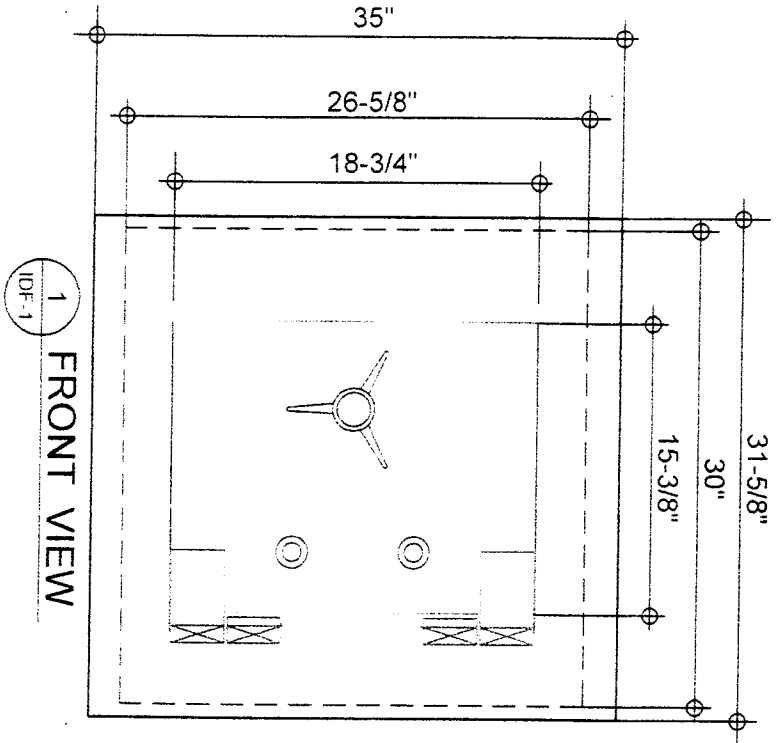
LANDBANK OF THE PHILIPPINES
 PROJECT MANAGEMENT & ENGINEERING DEPT.
 1998 M.H. DEL PILAR ST.
 CORNER DR. QUINTO ST., MALATE, MANILA

DETAIL SECTIONS

ALFARDO S. LACOR
 Head PMED

REVISIONS	DATE	BY	REASON
1	10/10/2018	ALFARDO S. LACOR	ISSUED FOR CONSTRUCTION

Emergency Vault Door



1 FRONT VIEW
IDF-1

DIMENSION	
Overall Dimensions (w/ architrave)	
H	35"
W	31-5/8"
Masonry Opening	
H	30"
W	26-5/8"
Net Door Thickness	
3-1/2"	
Clear Door Opening	
H	18-3/4"
W	15-3/8"

- NOTES:**
- THE SUPPLIER SHALL MAKE AVAILABLE THE ACTUAL UNIT FOR INSPECTION AT THEIR WAREHOUSE PRIOR TO POURING OF THE CONCRETE FILLING MATERIAL
 - THE SUPPLIER SHALL SUBMIT TEST RESULT FOR THE CONCRETE FILLING MATERIAL

TECHNICAL SPECIFICATIONS:

- Two (2) Hours Fire Resistant
- Clear Opening:** 18-3/4"H x 15-3/8"W
Net Door Thickness: 3mm door plate thick
Over-all Door Thickness: 3-1/2" Thick (handle not included)
Masonry Opening: 30"H x 26-5/8"W
Overall Dimensions(w/architrave): 35"H x 31-5/8"W
- Door Swing:** 180 degrees right or left
- Hinges:** made of heavy rolled steel with thrust washer, bolted to door and body.
- Cladding** - 1.2mm (Ga 18) thk. Stainless Steel (Hairline finish)
- Emergency vault door system**
1.2mm thk. stainless steel cladding with dual component system
Component 1 - Vault door face shall be 1.2mm thk. stainless steel cladding hairline finish with fire and burglar resistive cement base security insulation with 12mm diam. reinforced steel bar (RSB) Horizontal and Vertical spaced at approximately 150mm bothways and 12mm diam. bars x 75mm spaced @ 300mm o.c.b.w (traverse) with 3.2mm thk x 50mm x 50mm steel matting barrier to be filled by cement-based insulation (12,000 psi) minimum
Component 2 - mechanism bed plate - shall be 3mm thk hot rolled steel for the locking mechanism and time lock; backing cover should be mounted to consider the accessibility of the locking mechanism/time lock for maintenance and repair
- Locks** - the sliding locking bolt is controlled by means of two combination locks. Each combination is capable of one million combination changes and is installed at an ideal height for easy operation and setting.
- Mechanical Relock** - a relocking mechanism attached to the combination locksets which activates when attack is mounted against the lock itself.
- Thermal Lock** - a relocking mechanism will activate when fire occurs and the temperature reaches 370 degrees Fahrenheit
- Net weight: 260 kg.**



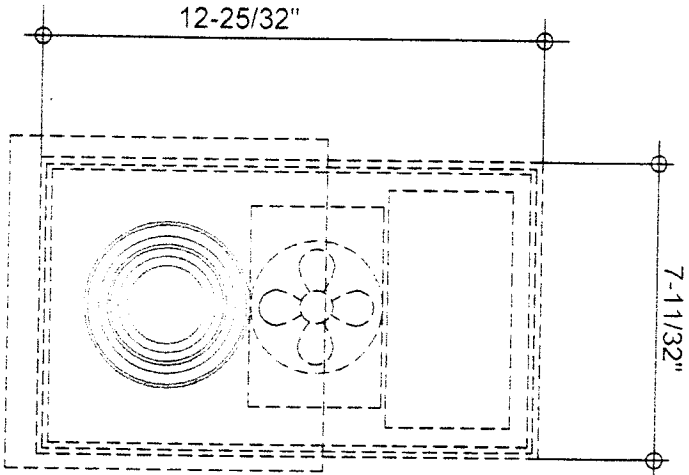
LANDBANK OF THE PHILIPPINES
PROJECT MANAGEMENT & ENGINEERING DEPT.
10801M H. DELA PLAZA ST. E.
CORNER DR. QUINTO ST., MALABON, MANILA

Emergency Vault Door

DATE: 01/11/2010
BY: [Signature]
ALIXANDER S. JAVIER
Lead PM/ID

NO.	REVISIONS	DATE
1	ISSUE FOR APPROVAL	01/11/2010
2	FOR REVIEW	01/11/2010
3	FOR REVIEW	01/11/2010
4	FOR REVIEW	01/11/2010

Vault Ventilator



1 FRONT ELEVATION
IDF-1

TECHNICAL SPECIFICATIONS:

1. The emergency vault ventilator consists of a heavy steel tube welded to a steel housing containing the components. Within the housing are fan motor, switching and locking mechanism and a light.
2. The exterior face plate is stainless steel cladding mate finish and measures 12-25/32" H x 7-11/32"W. The exposed sides, top and bottom are painted silver metallic. Operating instruction is printed on a stick-on plastic plate mounted on the face plate cladding. One low voltage light bulb is provided for the illumination of these instructions at all times.
3. The fan motor operates on 220 volts AC, the switch is actuated when the knob located at the interior face plate is being pushed.
4. The emergency vault ventilator is designed to fit all standard wall thickness from 12" to 15" thick finished.
5. Provides life supporting air to Vault in the event of accidental or forced entrapment!
6. Continuous Fresh Air - once activated, the 220 volt fan of the ventilator will continuously supply fresh air to the vault.
7. Illuminated Panel - the operating instruction panel on the vault ventilator is constantly illuminated, providing a constant source of working light and helping to reduce fear and anxiety in an already nerve-shattering atmosphere. This light functions independently of the main vault lighting, thereby providing light even when the central lighting source is inoperable.
8. Easy operation - simply turn the knob counter clockwise and pull the locking bar in a horizontal position and the fan motor will automatically activate. Push the bar forward and the air ports will open, providing fresh air from the fan and allowing oral communication with the outside. Push the bar forward completely through the housing, and the 3" diam passage for food and medical supplies will open.
9. **Ultimate in Space Saving** - emergency vault ventilator is designed so that it may be installed into the wall or through the vault door architrave, still using only a minimum space.
10. **Maintains Insurance Rates** - can be installed easily in existing vaults or in new construction. Its installation does not effect the basis of vault insurance classification. In addition to a steel plug that seals the exterior opening, the control housing contains 3/4" of steel plate. When the installation is recessed within the vault wall, displacement of concrete is compensated by the equivalent steel thickness.
11. **Pass thru Port** - this emergency vault ventilator has a 3" diam hole through the vault wall. This opening is normally blocked by a solid steel plug that is removable by someone on the inside of the vault only, may be used for passage of medical supplies, foods and tools.

NOTES:
• THE SUPPLIER SHALL MAKE AVAILABLE THE ACTUAL UNIT FOR INSPECTION AT THEIR WAREHOUSE.



LANDBANK OF THE PHILIPPINES
PROJECT MANAGEMENT & ENGINEERING DEPT
1599 M. H. DEL PILAR ST.,
CORNER DR. QUINTO ST., MALATE, MANILA

Vault Ventilator

AL EXANDRE S. LAZARO
11001 PHIL D

11001 PHIL D

11001 PHIL D

3-4